

D-Ended Sight Glass Fittings PN 10

Type KL 631

Pressure rating:

10 bar
higher pressures on request

Base frame:

1.4404 / 1.4571 / 1.4435 / 1.4462 / ST37 / H2
on demand with APZ DIN EN 10204-3.1
Flange thickness: 25mm

Top frame:

1.4301 / 1.4404 / ST37 / H2
Flange thickness: 15mm

Bolts:

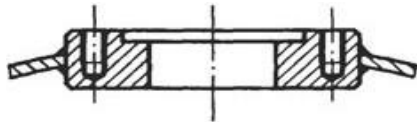
DIN 912 A2-70 or A4-70

Sight glass:

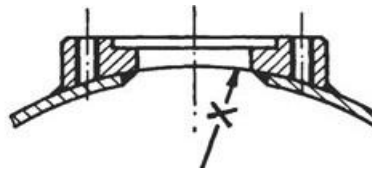
Soda-lime-silicate glass material acc. to DIN 8903 (up to 100°C)
Borosilicate glass material acc. to DIN 7081 (up to 243°C)

Seals (FDA compliant):

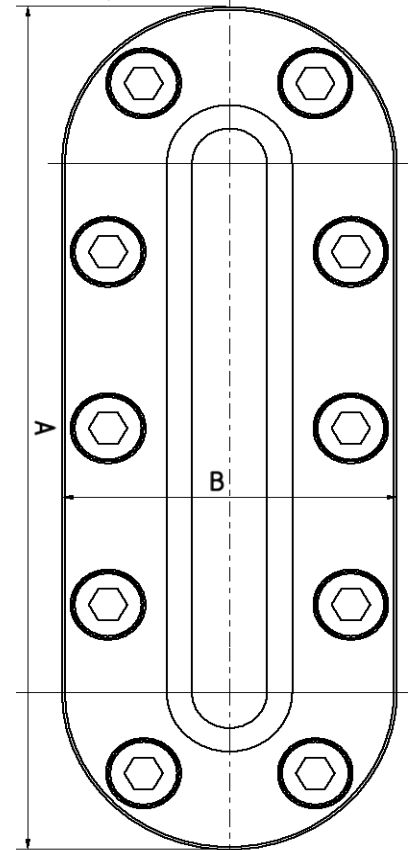
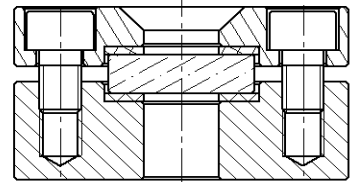
EPDM, Reinz AFM 34, PTFE
others on request



Version with blind tapings



or with cylindrical pad shape



Ordering exemple:

5 D-Ended Sight Glass Fittings type KL 631 Size 5 with radius R = 307mm
Base frame: 1.4404
Top frame: 1.4301
Borosilicate glass, Gaskets: EPDM

Size	Mounting Size (mm)		View (mm)		No. Of M10 Bolts	Glass Dimensions
	A	B	height	width		
0A	170	80	108	18	8	35/10 x 125
0B	215	80	153	18	10	35/10 x 170
1	260	80	198	18	12	35/10 x 215
2	305	80	243	18	14	35/10 x 260
3	350	80	288	18	16	35/10 x 305
4	395	80	333	18	18	35/10 x 350
5	440	80	378	18	20	35/10 x 395
6	485	80	423	18	22	35/10 x 440
8	575	80	513	18	26	35/10 x 530

Remark:

Please check the seal area of the base flange after welding; adjust it if uneven.



Manfred Kessler GmbH
Schauglasarmaturen
Grienmatt 44
D-79650 Schopfheim

Tel.: +49 (0) 7622 62343
Fax: +49 (0) 7622 7197
E-mail: info@kessler-sightglass.com
www.kessler-sightglass.com