

D-Ended Sight Glass Fittings PN 2,5

Type KL 633

Pressure rating:

2,5 bar
higher pressures on request

Base frame:

1.4404 / 1.4571 / 1.4435 / 1.4462 / ST37 / H2
on demand with APZ DIN EN 10204-3.1
Flange thickness: 25mm

Top frame:

1.4301 / 1.4404 / ST37 / H2
Flange thickness: 15mm

Bolts:

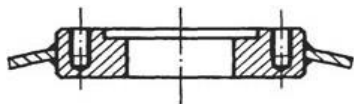
DIN 912 A2-70 or A4-70

Sight glass:

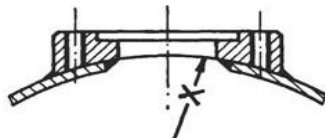
Soda-lime-silicate glass DIN 8903 (up to 100°C)
Borosilicate glass DIN 7081 (up to 243°C)

Seals (FDA compliant):

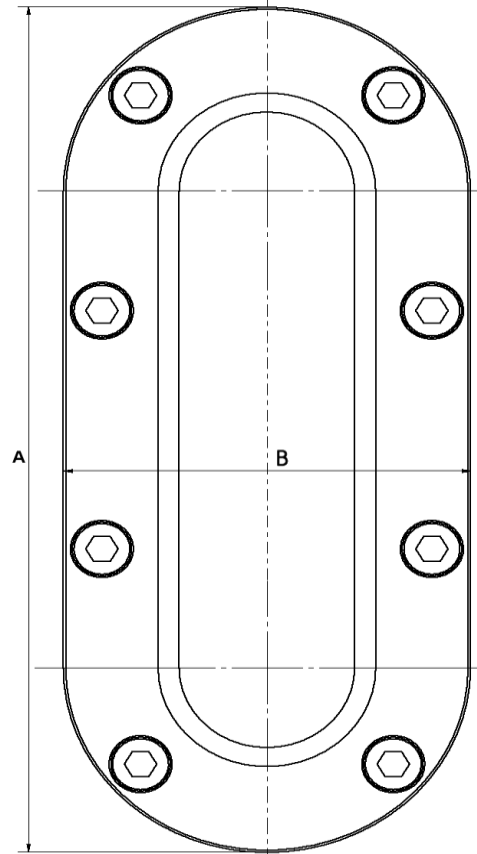
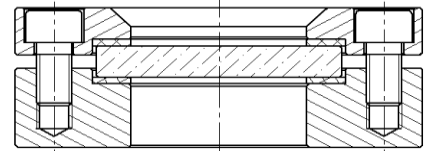
EPDM, Reinz AFM 34, PTFE
others on request



Version with blind tappings



or with cylindrical pad shape



Ordering excmple:

5 D-Ended Sight Glass Fittings type KL 633 Size 5 with radius R = 307mm
Base frame: 1.4404
Top frame: 1.4301
Borosilicate glass, Gaskets: EPDM

Size	Mounting Size (mm)		View (mm)		No. Of M10 Bolts	Glass Dimensions
	A	B	height	width		
1	266	116	200	50	8	70/10 x 220
2	341	116	275	50	10	70/10 x 295
3	416	116	350	50	12	70/10 x 370
4	491	116	425	50	14	70/10 x 445
5	566	116	500	50	16	70/10 x 520
6	641	116	575	50	18	70/10 x 595
8	791	116	725	50	22	70/10 x 745

Remark:

Please check the seal area of the base flange after welding; adjust it if uneven.



Manfred Kessler GmbH
Schauglasarmaturen
Grienmatt 44
D-79650 Schopfheim

Tel.: +49 (0) 7622 62343
Fax: +49 (0) 7622 7197
E-mail: info@kessler-sightglass.com
www.kessler-sightglass.com