

D-Ended Sight Glass Fittings PN 6

Type KL 632

Pressure rating:

6 bar
higher pressures on request

Base frame:

1.4404 / 1.4571 / 1.4435 / 1.4462 / ST37 / H2
on demand with APZ DIN EN 10204-3.1
Flange thickness: 25mm

Top frame:

1.4301 / 1.4404 / ST37 / H2
Flange thickness: 15mm

Bolts:

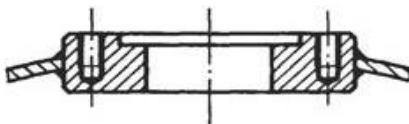
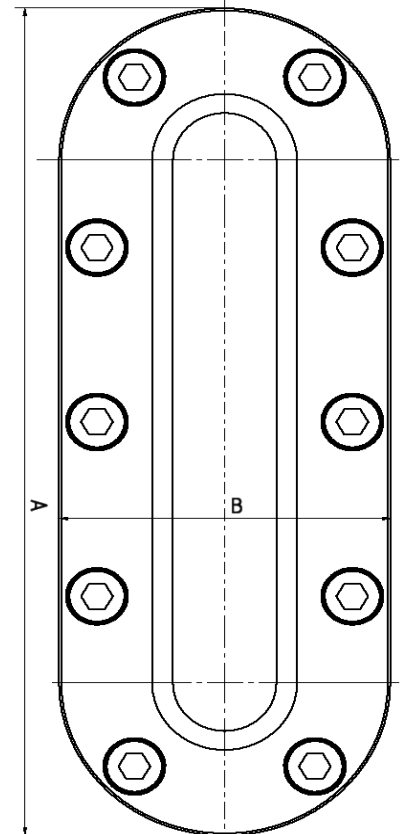
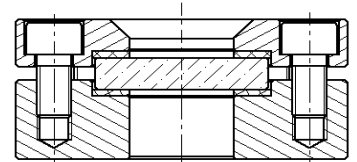
DIN 912 A2-70 or A4-70

Sight glass:

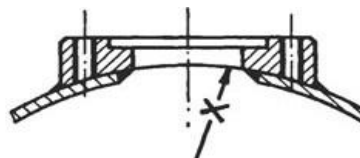
Soda-lime-silicate glass DIN 8903 (up to 100°C)
Borosilicate glass DIN 7081 (up to 243°C)

Seals (FDA compliant):

EPDM, Reinz AFM 34, PTFE
others on request



Version with blind tappings



or with cylindrical pad shape

Ordering exmple:

5 D-Ended Sight Glass Fittings type KL 632 Size 5 with radius R = 307mm
Base frame: 1.4404
Top frame: 1.4301
Borosilicate glass, Gaskets: EPDM

Size	Mounting Size (mm)		View (mm)		No. Of M10 Bolts	Glass Dimensions
	A	B	height	width		
0	206	96	140	30	8	50/10 x 160
1	261	96	195	30	10	50/10 x 215
2	316	96	250	30	12	50/10 x 270
3	371	96	305	30	14	50/10 x 325
4	426	96	360	30	16	50/10 x 380
5	481	96	415	30	18	50/10 x 435
6	536	96	470	30	20	50/10 x 490
8	646	96	580	30	24	50/10 x 600

Remark:

Please check the seal area of the base flange after welding; adjust it if uneven.



Manfred Kessler GmbH
Schauglasarmaturen
Grienmatt 44
D-79650 Schopfheim

Tel.: +49 (0) 7622 62343
Fax: +49 (0) 7622 7197
E-mail: info@kessler-sightglass.com
www.kessler-sightglass.com